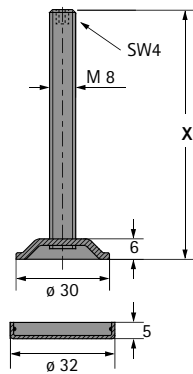


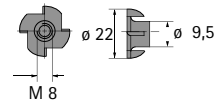
Sockelverstellerschraube mit Gewinde M8



- ▶ Mit Fußkappe
- ▶ Stahl verzinkt / Kunststoff transparent

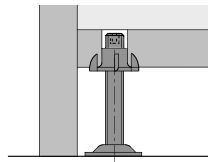
Maß X mm	Bestell-Nr.	VE
50	9 318 255	1/50 St.
60	9 318 257	1/50 St.
70	9 318 259	1/50 St.
80	9 318 260	1/50 St.
100	9 318 261	1/50 St.

Einschlagmutter mit Gewinde M8

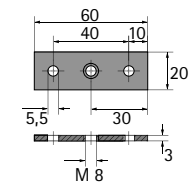


- ▶ Stahl blank

Bestell-Nr.	VE
0 047 643	1/50 St.

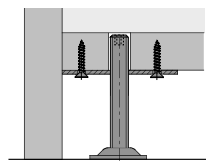


Halteplatte mit Gewinde M8

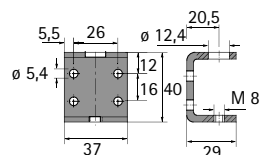


- ▶ Stahl verzinkt

Bestell-Nr.	VE
0 047 645	1/50 St.



Doppelwinkel mit Gewinde M8



- ▶ Stahl verzinkt

Bestell-Nr.	VE
0 071 870	1/250 St.

